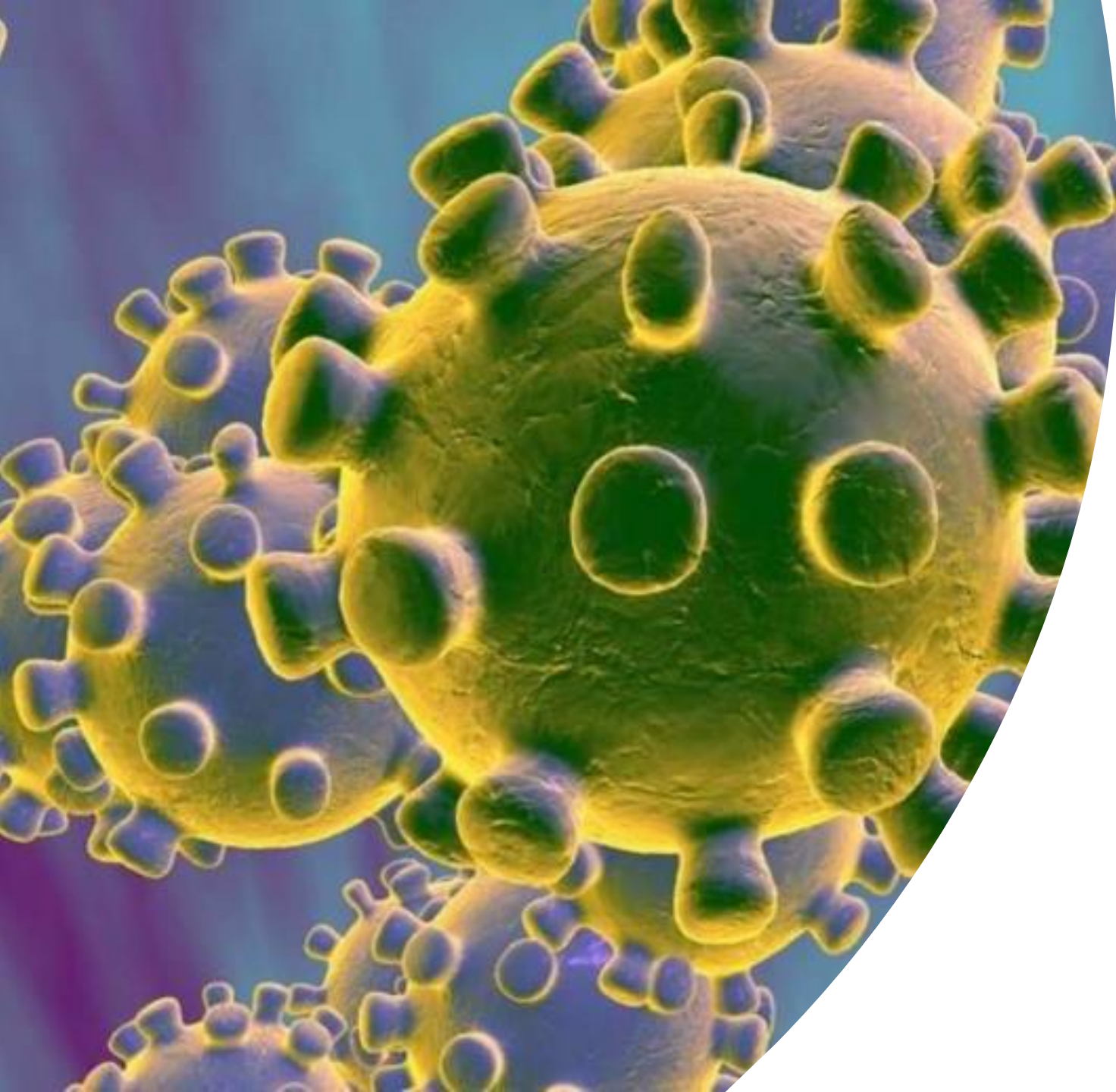


# COVID -19

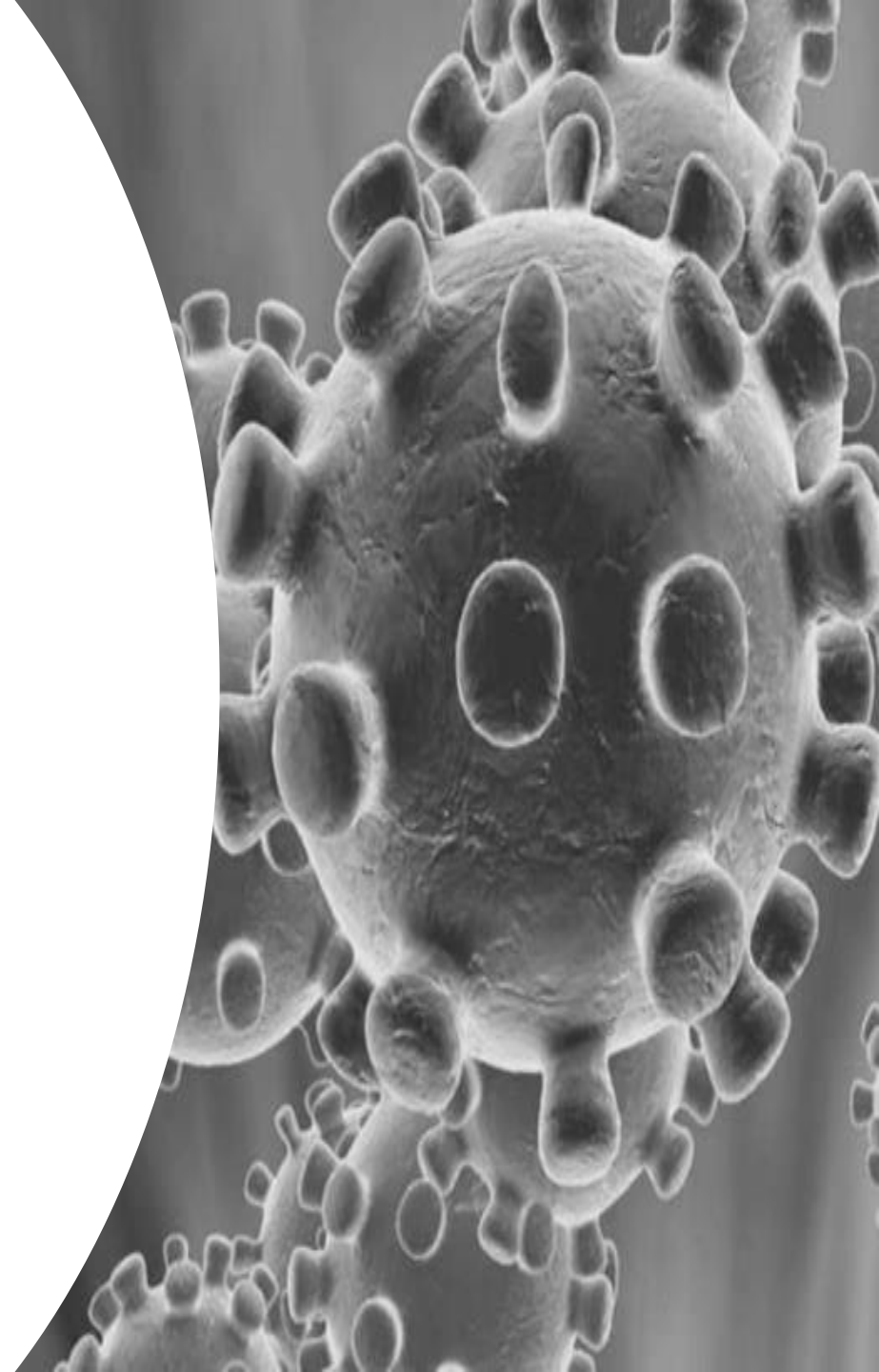
PRIVATE SECTOR SURVEY

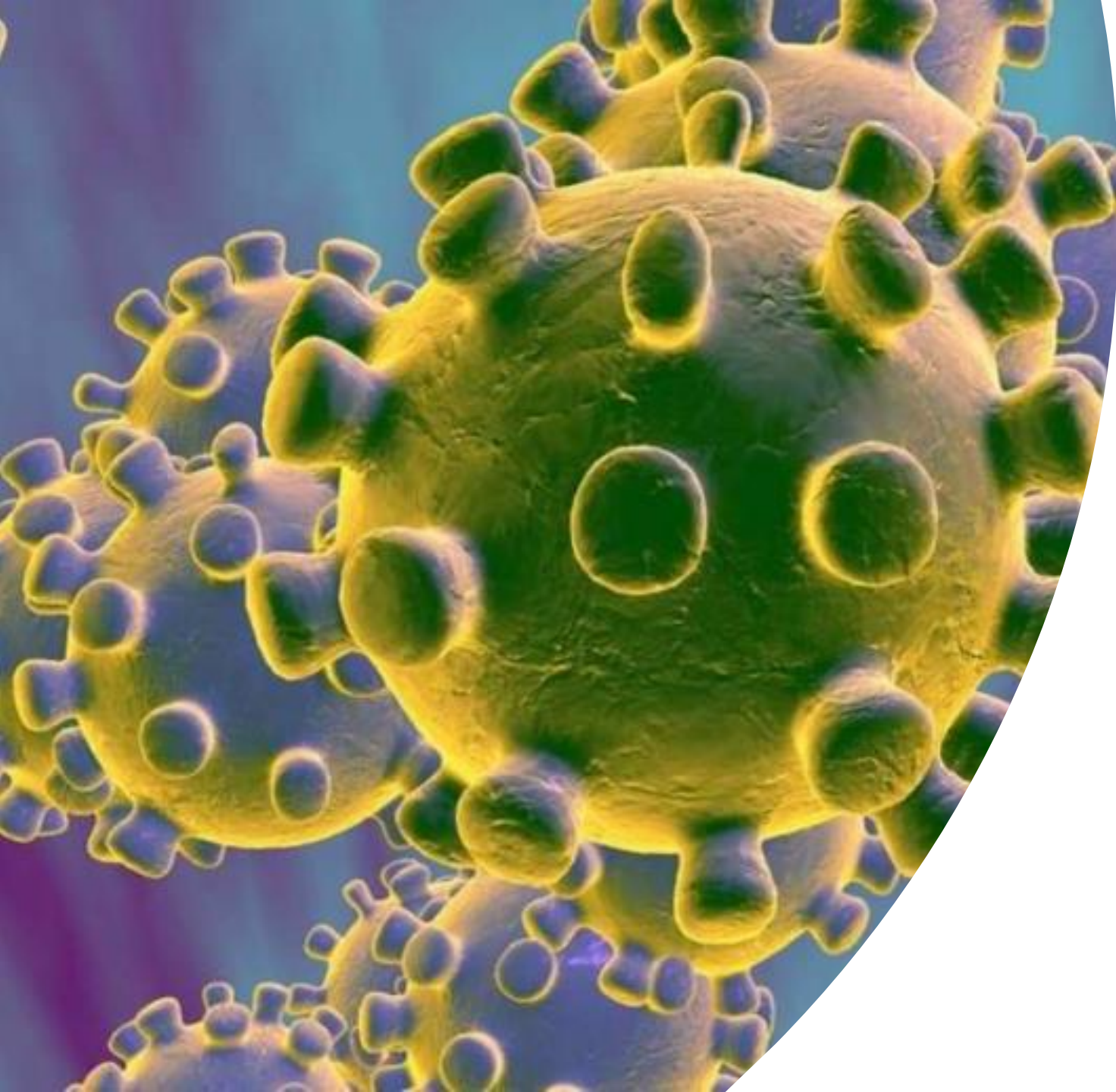


INTENT : CREATE A DATA BASE\  
TO ESTABLISH AN RO OF THE  
ACTIVE WORKFORCE

# DATA COLLECTED

- SECTOR
- MUNICIPALITY
- ACTIVE WORKFORCE
- TOTAL WORKFORCE
- EMPLOYEES COVID-19 POSITIVES
- QUARANTINE
- RISK CONDITION
- NPI'S MEASURES
- PERIOD





# RESULTS

# RESULTS

**PERIOD: 4/15 TO 4/23**

## **SECTORS**

AGRICULTURE

PHARMA/ BIOPHARMA

COMMERCIAL

COMMUNICATION

ENERGY

FINANCIAL SERVICES

FOOD

HEALTH

INFRASTRUCTURE

MANUFACTURING

MEDIA

MEDICAL DEVICES

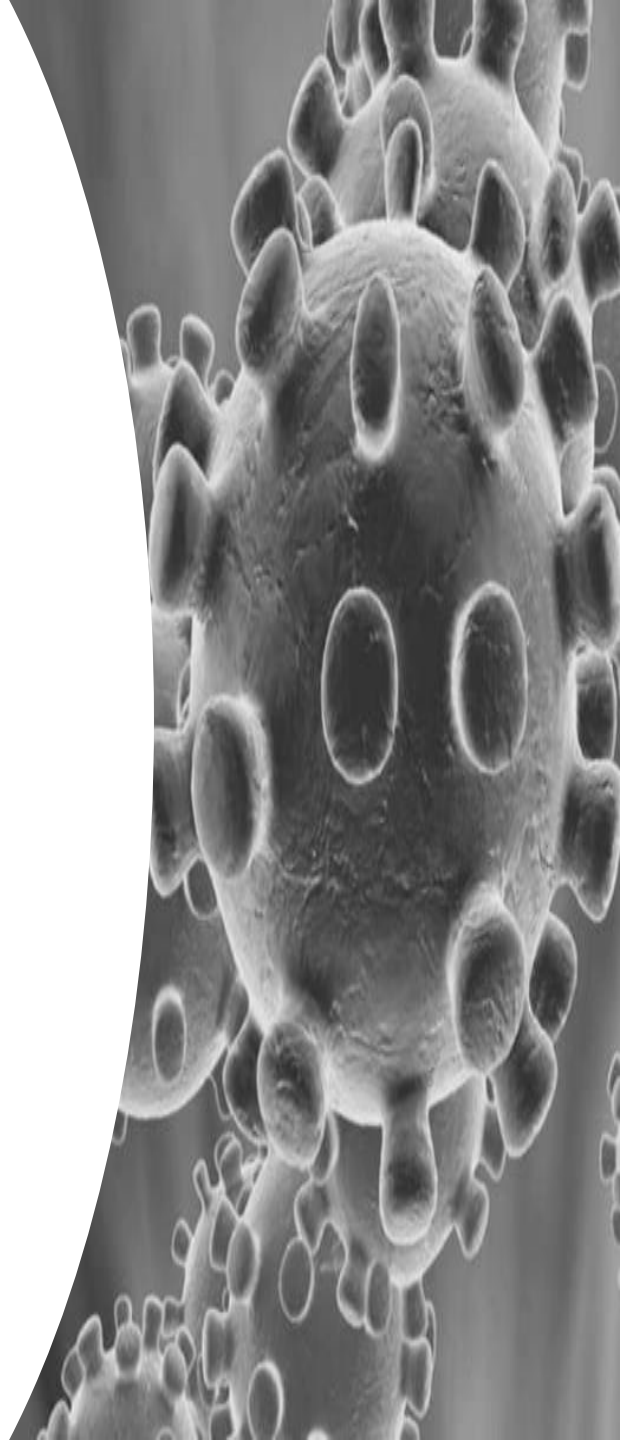
NGO

OTHER

SECURITY

TOURISM

TRANSPORTATION



# SURVEY RESULTS ANALYSIS

**TOTAL ACTIVE EMPLOYEES : 63,567**

**POSITIVE COVID-19 RESULTS FOR ACTIVE WORKFORCE : 25 ( 0.393%)**

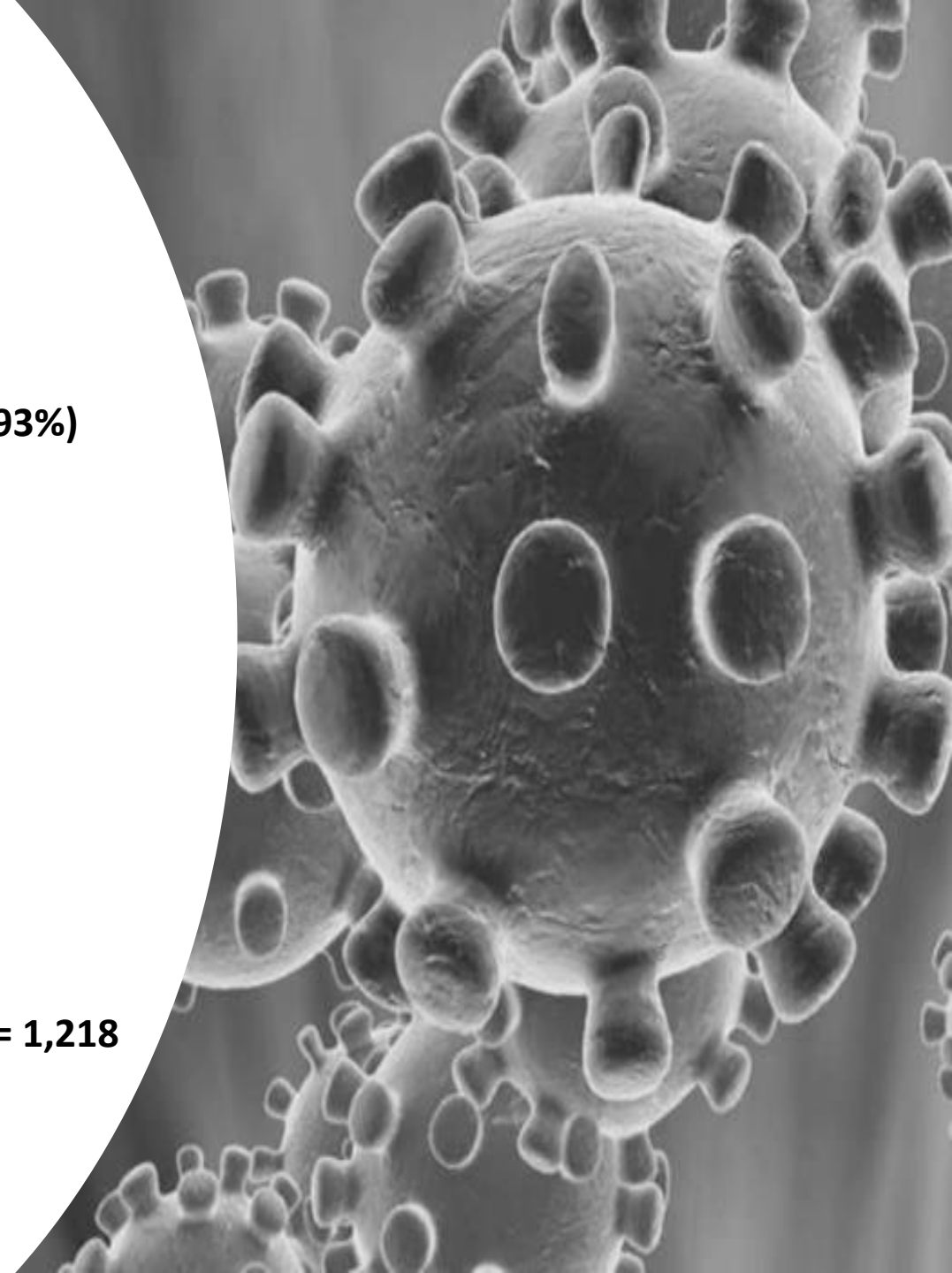
**DEPARTMENT OF HEALTH DATA @ 4/23**

**POSITIVE PATIENTS= 1,416**

- **Positives less than 19 years : 76**
- **Positives over 70 years : 166**
- **Positives between 20 and 69 : 1174**
  
- **Estimated total Population = 3,100,000**

**Estimate based on active workforce survey :  $3,100,000 * 0.393\% = 1,218$**

**Difference :  $1,218 - 1,174 = 44$  (3.6%)**



# SURVEY ANALITICS

TOTAL ACTIVE EMPLOYEES: 63,567

POSITIVE COVID-19 RESULTS : 25 ( 0.39%)

6 from the Food Sector (24%)

5 from Communications Sector (20%)

5 from Financial Services (20%)

4 from Security (16%)

## FOOD SECTOR

5 / 29,634 Supermarkets 0.017%

## COMMUNICATIONS

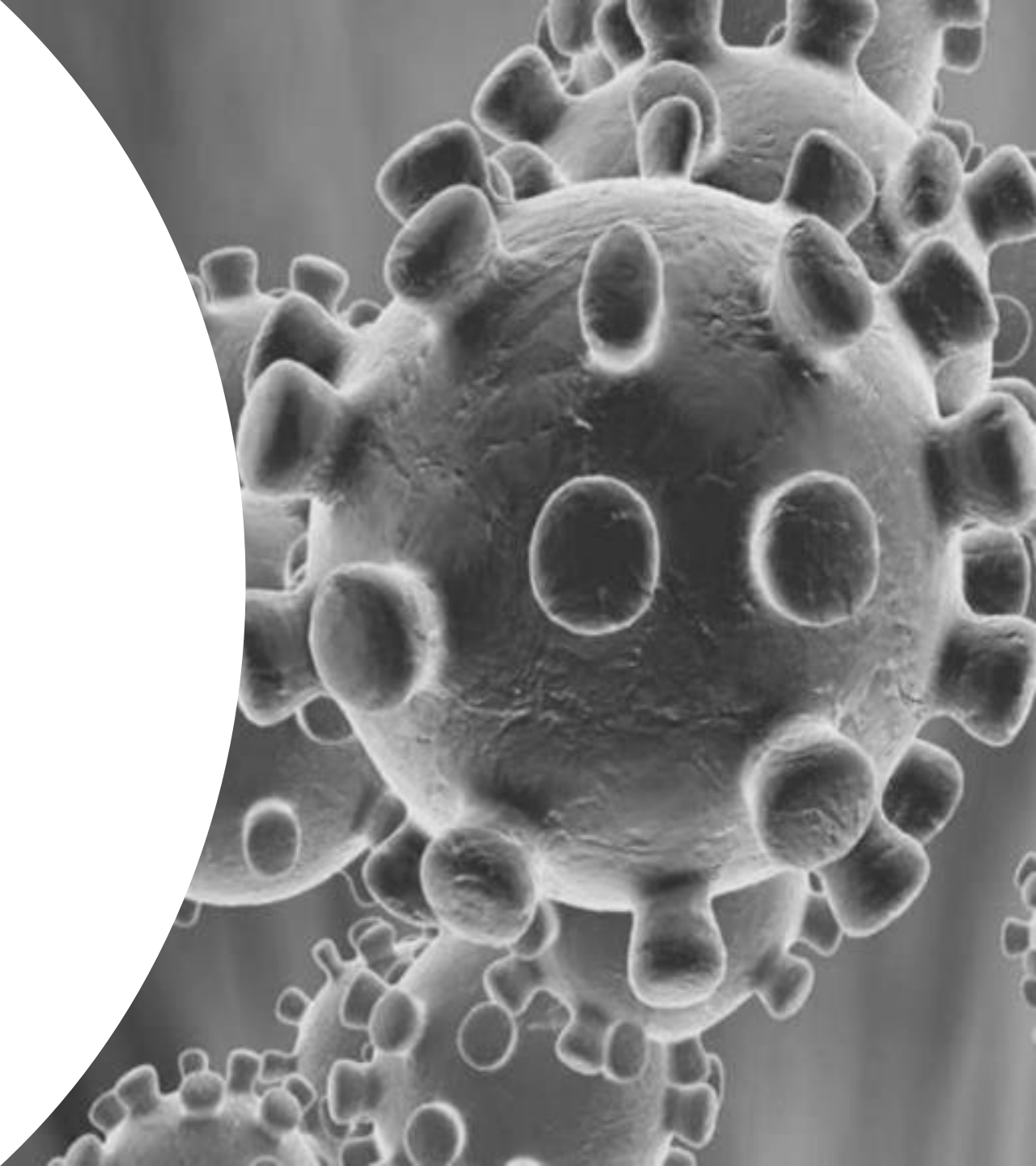
5/912 : 0.55%

## FINANCIAL SERVICES

5/5959 Banks. 0.084%

## SECURITY

4/2576 Security Companies 0.081%



# ACTIVE EMPLOYEES BY SECTOR

DISTRIBUTION BY SECTOR

